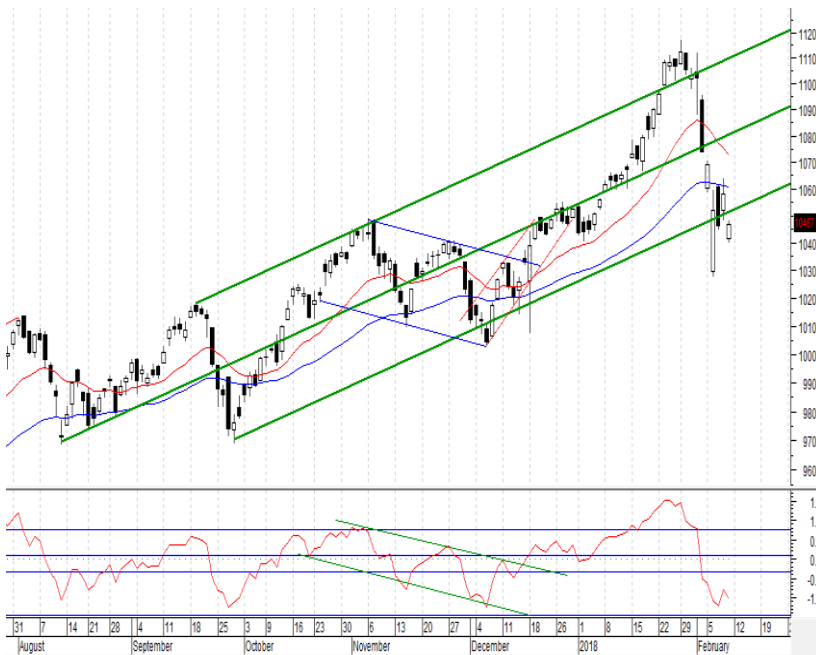


Daily Market Update

February 12th, 2018



Nifty Technical Outlook: -

On Friday, Indian indices have opened on negative note by more than 200 points and it has recovered from low and it closed at 10455 with 122 pints. Technically, the short term trend has turned weak on chart as it is sustaining below 10666-mark. The medium to long term trend remains upward until and unless it gives closing below 9960-10030marks. Nifty, till it trades below an important support level of 10666 the weakness is likely to continue in coming days and is an every rise may witness for profit booking opportunity on chart. The correction was also due on chart since long. As of now, on downside it has support at 10330-10220. The fresh Bull Run is likely to resume only if it trades and sustains above 10888 only.

For the day, it may trade positive only if it trades above 10499. In this case it may have potential to move towards 10522-10555. If it slides below 10422 then it may find the next support at 10388-10355.

Index	Current	% Change
Sensex	34005.76	-1.18
NIFTY 50	10454.95	-1.15
INDIA VIX	19.2300	8.20
NIFTY MIDCAP 50	5172.05	0.00
NIFTY BANK	25463.65	-1.76
NIFTY AUTO	11234.75	-0.96
NIFTY FMCG	26664.30	-0.46
NIFTY IT	12492.70	-0.76
NIFTY MEDIA	3379.10	-0.95
NIFTY METAL	3986.40	1.27
NIFTY PHARMA	9222.55	-0.43
NIFTY PSU BANK	3480.65	-1.21
NIFTY REALTY	328.00	0.35
NIFTY CONSUMPTION	4818.90	-0.52
NIFTY CPSE	2609.25	-0.75
NIFTY ENERGY	-	-
NIFTY INFRA	-	-
NIFTY MNC	-	-

Nifty F&O Highlights:-

Nifty Jan 10400 and 10600 Call strikes have seen the maximum addition of 8.3 and 8.0 lacs shares in Open Interest.

Nifty 10100 and 10200 Put strikes have seen the maximum addition of 6.9 and 6.1 lacs shares in open Interest.

Nifty 11100 Call strike has the maximum Open interest more than 57.7 lacs shares in open Interest followed by 11000 strike stood at more than 53.9 lacs shares among all Call strikes.

Nifty 10000 Put strike has the maximum Open Interest more than 57.5 lacs shares followed by 10500 strike stood at more than 51.3 lacs shares.

Reference level for Nifty (Spot)

Index	Support1	Support2	Reference Point	Resistance1	Resistance2
Nifty(Spot)	10400	10385	10475	10535	10630

24-Jan-18			Participant wise Open Interest Outstanding							
Date	Category	Future Index Long	Future Index Short	Option Index Call Long	Option Index Call Short	Option Index Put Long	Option Index Put Short	Future Stock Long	Future Stock Short	Nifty Spot close
9-Feb-18	Client	241497	188505	757340	611721	609047	888555	1061507	360327	10454.95
9-Feb-18	DII	18486	50339	63441	0	87700	0	34284	856335	
9-Feb-18	FII	116112	133089	231879	197867	438335	170277	562864	531234	
9-Feb-18	Pro	28661	32823	168024	411095	177505	253755	162436	73195	
24-Jan-18			Change in Open Interest- Participant wise							
Date	Category	Change in Future Index Long	Change in Future Index Short	Change in Option Index Call Long	Change in Option Index Call Short	Change in Option Index Put Long	Change in Option Index Put Short	Change in Future Stock Long	Change in Future Stock Short	Nifty Future close
9-Feb-18	Client	24296	-7744	44780	32389	-18289	27672	13597	14007	10483
9-Feb-18	DII	533	304	0	0	0	0	536	-5980	
9-Feb-18	FII	-6818	26551	-675	5607	33659	-1647	-954	7546	
9-Feb-18	Pro	1171	71	1907	8016	19622	8967	4963	2569	

Date	Change in Open Interest						Total Open Interest			Change in Longs	Change in Shorts	Net Long / Short	Nifty close
	Change in Future Index Long	Change in Future Index Short	Change in Option Index Call Long	Change in Option Index Call Short	Change in Option Index Put Long	Change in Option Index Put Short	Total Longs	Total Shorts	Net position				
12-Jan-18	6294	4654	21122	7496	2483	5029	32445	529997	66093	32445	14633	17812	10681.3
15-Jan-18	6037	12131	31915	4412	-6853	24287	62239	539687	118642	62239	9690	52549	10741.6
16-Jan-18	2977	3888	9593	340	8008	5105	17675	551923	124081	17675	12236	5439	10700.5
17-Jan-18	3283	9733	12191	3405	6526	8855	24329	571587	128746	24329	19664	4665	10788.6
18-Jan-18	5243	-2083	-837	4	-27287	-3522	884	542221	158996	884	-29366	30250	10817.0
19-Jan-18	13812	12561	20659	8084	14053	20437	54908	576919	179206	54908	34698	20210	10894.7
22-Jan-18	-3477	17990	-5176	-265	-7561	28258	19605	587083	188647	19605	10164	9441	10966.2
23-Jan-18	17338	10487	-14877	-7341	5812	13886	16347	596041	196036	16347	8958	7389	11084.0
24-Jan-18	19285	6064	-20701	5794	12753	-5207	-6623	620652	164802	-6623	24611	-31234	11086.0
25-Jan-18	-38705	-13746	-89168	-33817	-131001	-161948	-289821	318373	177260	-289821	-302279	12458	11069.7
29-Jan-18	8491	10940	12535	7256	24701	17747	38773	361270	173136	38773	42897	-4124	11130.4
30-Jan-18	843	17494	4137	4368	12958	-2221	2759	396090	141075	2759	34820	-32061	11049.7
31-Jan-18	-663	-55	-3699	6592	15408	10393	6031	418035	125161	6031	21945	-15914	11027.7
1-Feb-18	-5157	-4060	-4538	24132	-4841	-822	-10517	433266	99413	-10517	15231	-25748	11016.9
2-Feb-18	-14162	9390	8626	45122	54538	-1572	-7108	542316	-16745	-7108	109050	-116158	10760.6
5-Feb-18	-148	7043	-4035	10615	17839	1666	-2517	577813	-54759	-2517	35497	-38014	10666.2
6-Feb-18	-2904	17638	7020	10006	50040	6036	10152	655497	-122291	10152	77684	-67532	10498.3
7-Feb-18	-14277	8541	10326	29193	21926	-2800	-6751	715157	-188702	-6751	59660	-66411	10476.7
8-Feb-18	6710	3029	-7487	-12747	-1965	1730	953	703474	-176066	953	-11683	12636	10476.7
9-Feb-18	-6818	26551	-675	5607	33659	-1647	-9140	769291	-251023	-9140	65817	-74957	10455.0

FII's have reduced the long position in Index Future on Friday. They have reduced 6818 in Index Future long while they have added the positions in Index Future short by 26551. On option side, they have reduced the 1647 Open Interests in Index PUT short where they have added 769291 in Index PUT long. On Call side, they have added 5607 in Index CALL short and reduced 675 in Index CALL long. Overall, they have reduced the 9140 positions in long against short added by 65817.

Today News / Corporate Action

Adani Power: The commerce ministry has rejected Adani Power's proposal to set up a special economic zone for the power sector in Jharkhand entailing an investment of Rs 15,002 crore as it was inconsistent with the sectoral guidelines, an official said. The decision was taken by the Board of Approval, the highest decision making body on special economic zone (SEZ) related matters, in its meeting on February 5. The inter-ministerial board is headed by the commerce secretary.

Reliance Infrastructure (RInfra): The company said it has won a Rs 567-crore order from state-owned NTPC for Flue Gas Desulphurisation (FGD) works at the latter's 3x500 MW power plant in Jhajjar, Haryana. FGD method is used to remove sulfur dioxide from exhaust flue gases of fossil-fuel power plants.

Ansal Properties: A district court in south Delhi has issued bailable warrants for the arrest of Pranav Ansal, promoter of Ansal Properties and Infrastructure, in a case related to a dispute between him and a former business associate, Suneal Mangal. The warrants were issued by the court on January 23 as Ansal did not respond to summons issued by the court, which is hearing a petition filed by Mangal.

Petronet LNG: India's biggest importer of gas and its Japanese partners will invest \$300 million to set up Sri Lanka's first liquefied natural gas (LNG) terminal near Colombo, its CEO Prabhat Singh said. The Indo-Japanese partnership will set up a 2.6-2.7 MT a year floating LNG receipt facility off the island's western coast, bigger than the envisaged 1.5-2 million tonnes a year facility.

GVK Power and Infrastructure: The Hyderabad-based company, which is building one of India's largest airports at the outskirts of Mumbai, will raise up to \$1b by issuing dollar-denominated bonds to fund its project and to refinance the current debt

ONGC: An ONGC-led consortium of Indian state oil firms has been awarded 10% stake in Abu Dhabi's offshore Lower Zakum Concession for \$600 million, ONGC said in a statement. This is the first time that Indian firms have been given a stake in Abu Dhabi's oil and gas field.

Increase in Open Interest & Increase in Price

Symbol	Current Price	% Change in Price	Current OI	% Change In OI
HINDPETRO	394.5	1.19	14910	14.05
HINDZINC	306	5.99	4531	13.84
SAIL	93.95	8.74	6370	10.07
BATAINDIA	719	0.71	2717	10.00

Increase in Open Interest & Decrease in Price

Symbol	Current Price	% Change in Price	Current OI	% Change In OI
GLENMARK	538	-7.11	8084	19.07
INDUSINDBK	1650	-1.28	24046	13.49
NIFTY	10483	-0.84	313625	12.74
CUMMINSIND	824.55	-1.07	1174	9.11

Decrease in Open Interest & Increase in Price

Symbol	Current Price	% Change in Price	Current OI	% Change In OI
CEATLTD	1547.6	1.11	3875	-6.47
APOLLOTYRE	271.4	0.2	3445	-4.36
GODFRYPHLP	865	0.37	1623	-1.4
ALBK	60.35	1.34	1824	-1.35

Decrease in Open Interest & Decrease in Price

Symbol	Current Price	% Change in Price	Current OI	% Change In OI
PIDILITIND	880.6	-0.50	1139	-5.95
ACC	1667	-1.77	4808	-4.74
SUNTV	972.65	-2.67	4202	-3.60
NIFTYIT	12540	-0.52	721	-3.22

Global Equity Indices (Asian Indices at 8:40 am)

Indices		
Dow 30	24190.90	1.38
S&P 500	2619.55	1.49
NASDAQ	6874.49	1.44
S&P 500 VIX	29.06	-13.15
AEX	518.03	-1.66
CAC 40	5079.21	-1.41
FTSE 100	7092.43	-1.09
DAX	12107.48	-1.25
BOVESPA	80898.70	-0.78
HANG SENG	29754.00	0.74
NIKKEI 225	21382.62	-2.32
KOSPI	2386.69	0.97
China A50	13046.37	0.74

Date	Event	Country	Actual	Expected
10/04/2017	IN RBI Interest Rate Decision	INR	6%	6%
10/11/2017	US FOMC Minutes			
10/12/2017	Industrial Production YoY	INR	1.2%	1.9%
	Inflation Rate YoY	INR	3.36%	3.6%
10/13/2017	US Core Inflation Rate	US	1.7%	1.8%
	US Retail Sales MoM	US	-0.2%	0.3%
10/20/2017	US Existing Home Sales	US	5.35M	5.29M
10/25/2017	US Durable Goods Orders MoM	US	1.7%	0.3%
10/26/2017	US New Home Sales	US	560K	550K
10/27/2017	US GDP Growth Rate QoQ	US	3.1%	2.0%
11/02/2017	US Fed Interest rate Decision	US	1.25%	1.25%
11/03/2017	US Balance of Trade	US	\$-42.4B	\$-45B
11/29/2017	US GDP Growth Rate QoQ	US	3.1%	2.0%
11/30/2017	GDP Growth Rate YoY	INR	5.7%	6.5%
12/06/2017	RBI Interest Rate Decision	INR	6%	6%
12/08/2017	Foreign Exchange Reserves	INR	\$400.74B	\$401.2B
	Bank Loan Growth	INR	8.6%	
12/11/2017	Balance of Trade	INR	\$-14.02B	
12/12/2017	Current Account	INR	\$-14.3B	\$-8B
	Industrial Production	INR	3.8%	3.2%
	Inflation Rate YoY	INR	3.58%	4%
12/14/2017	WPI Inflation YoY	INR	3.59	3.5%
12/14/2017	Foreign Exchange Reserves	INR		\$401.8B
01/04/2018	Nikkei Services PMI			
01/06/2018	Bank Loan Growth	INR		
01/10/2018	Balance of Trade Dec	INR	\$-13.83B	\$-12.6B
01/12/2018	Industrial Production YoY	INR	2.2%	3.9%
	Inflation Rate YoY	INR	4.88%	4.70%
01/15/2018	WPI Inflation YoY Dec	INR	3.93%	4.2%
01/30/2018	Government Budget Value Dec	INR	6120B	-5753.6B
02/07/2018	RBI Interest Rate Decision	INR	6%	
	Cash Reserve Ratio	INR	4%	

Published on: Feb 12th, 2018 © Just Trade Securities Limited

Just Trade Securities Limited (Formerly “Bajaj Capital Investor Services Limited), CIN No.: U67120DL2004PLC130803, Regd Office: Bajaj House 97, Nehru Place, New Delhi – 110019 Tel: (91-11) 41693000. Fax: (91-11) 66608888 E-mail: info@justtrade.in Website: www.justtrade.in; National Stock Exchange of India Ltd. SEBI Regn. No. : INB 231269334/ INB 231269334, Bombay Stock Exchange Ltd. SEBI Regn. No.:INB011269330/ INF011269330; SEBI RA Regn.:- INH000002862. For Research related queries, write to: Mr. Raj BardhanKumarSinghat research@rajbks@bajajcapital.com. For Account related information, write to customer care: customer@justtrade.in or call on 1800-3000-9000

For Disclosures, please click http://justtrade.in/jt_disclosures.pdf