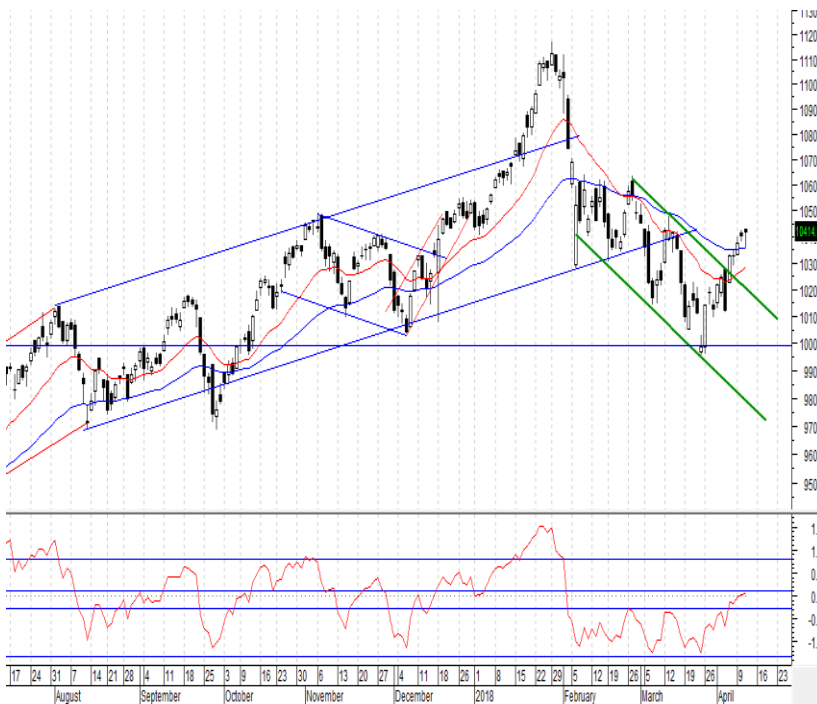


Daily Market Update

April 13th, 2018



Nifty Technical Outlook: -

Nifty has extended the opening gains and it closed at 10459 with 42 point positive. It has been holding above the immediate resistance level of 10330, which is a positive sign. Now what next? Technically, it seems on chart that it may move towards next level of 10550-10660, where it may face resistance above it and may witness for profit booking in short term. The fresh bull-run start is likely to once it trades above 10660 only. Till it trades below it has risk and probability to witness for profit booking in near term.

The profit booking is likely to accelerate once it got re-breached the 10330 on down side. In this case it may find the next support at 10220-10030-9960-9660.

For the day, the trend is positive only if it trades above 10488 then it may move towards 10522-10555. If it slides below 10422 then it may find the next support at 10388-10366-10333.

Index	Current	% Change
Sensex	34101.13	0.47
NIFTY 50	10458.65	0.40
INDIA VIX	14.5225	-1.34
NIFTY MIDCAP 50	5280.50	-0.15
NIFTY BANK	25195.10	0.39
NIFTY AUTO	11459.55	0.05
NIFTY FMCG	27041.45	-0.43
NIFTY IT	13168.20	3.21
NIFTY MEDIA	3338.95	-0.04
NIFTY METAL	3690.45	-1.38
NIFTY PHARMA	8685.05	-0.88
NIFTY PSU BANK	2955.35	-1.27
NIFTY REALTY	299.55	-1.92
NIFTY CONSUMPTION	4900.65	-0.23
NIFTY CPSE	2425.30	-0.09
NIFTY ENERGY	13574.80	-0.05
NIFTY INFRA	3426.35	-0.15
NIFTY MNC	14377.55	-0.53

Nifty F&O Highlights:-

Nifty Apr 10400 and 10700 Call strikes have seen the maximum addition of 2.2 and 1.4 lacs shares in Open Interest.

Nifty 10400 and 10300 Put strikes have seen the maximum addition of 13.4 and 12.0 lacs shares in open Interest.

Nifty 10500 Call strike has the maximum Open interest more than 41.0 lacs shares in open Interest followed by 10600 strike stood at more than 39.5 lacs shares among all Call strikes.

Nifty 10300 Put strike has the maximum Open Interest more than 55.5 lacs shares followed by 10000 strike stood at more than 50.6 lacs shares.

Reference level for Nifty (Spot)

Index	Support1	Support2	Reference Point	Resistance1	Resistance2
Nifty(Spot)	10385	10350	10440	10475	10500

			Participant wise Open Interest Outstanding							
Date	Category	Future Index Long	Future Index Short	Option Index Call Long	Option Index Call Short	Option Index Put Long	Option Index Put Short	Future Stock Long	Future Stock Short	Nifty Spot close
12-Apr-18	Client	304932	174212	381495	531678	736742	894779	993726	438397	10458.65
12-Apr-18	DII	25026	35860	60927	0	80532	0	25209	847481	
12-Apr-18	FII	51027	145879	224979	80220	374699	154897	655067	460060	
12-Apr-18	Pro	24029	49063	172686	228188	155344	297641	147032	75096	
24-Jan-18			Change in Open Interest- Participant wise							
Date	Category	Change in Future Index Long	Change in Future Index Short	Change in Option Index Call Long	Change in Option Index Call Short	Change in Option Index Put Long	Change in Option Index Put Short	Change in Future Stock Long	Change in Future Stock Short	Nifty Future close
12-Apr-18	Client	13953	10925	-120897	-72734	-63641	-91683	3955	16076	10459
12-Apr-18	DII	-53	1375	0	0	0	0	1747	-8980	
12-Apr-18	FII	413	-4061	4749	-2244	2010	23273	5246	3163	
12-Apr-18	Pro	2273	8347	-6007	-47177	-16701	-9922	-453	236	

Change in Open Interest							Total Open Interest						
Date	Change in Future Index Long	Change in Future Index Short	Change in Option Index Call Long	Change in Option Index Call Short	Change in Option Index Put Long	Change in Option Index Put Short	Total Longs	Total Shorts	Net position	Change in Longs	Change in Shorts	Net Long / Short	Nifty close
14-Mar-18	5877	9041	-397	1958	5402	-879	4601	603643	-66836	4601	16401	-11800	10410.9
15-Mar-18	-1428	7573	-10895	-1796	4398	2788	-9535	613818	-86546	-9535	10175	-19710	10360.2
16-Mar-18	272	29222	-7482	4682	4075	-12285	-19495	651797	-144020	-19495	37979	-57474	10195.2
19-Mar-18	1750	3239	-4696	33731	35756	1684	-1262	724523	-218008	-1262	72726	-73988	10094.3
20-Mar-18	-8313	9921	410	2623	-6105	4214	-3689	730962	-228136	-3689	6439	-10128	10124.4
21-Mar-18	-6018	10635	6026	-1990	2839	6645	6653	742446	-232967	6653	11484	-4831	10155.3
22-Mar-18	4504	2424	-1815	-2546	-4619	-11802	-9113	737705	-237339	-9113	-4741	-4372	10114.8
23-Mar-18	-14464	10892	10725	10426	1013	-319	-4058	760036	-263728	-4058	22331	-26389	9998.1
26-Mar-18	-9484	15967	2134	3208	8306	-3048	-10398	787517	-301607	-10398	27481	-37879	10130.7
27-Mar-18	5723	3292	-3962	7219	6379	-6403	-4642	804407	-323139	-4642	16890	-21532	10184.2
28-Mar-18	-76481	68161	-93273	-98454	114112	-33937	-203691	523680	-246103	-203691	-280727	77036	10113.7
2-Apr-18	177	-1712	23709	3850	13654	2679	26565	539472	-235330	26565	15792	10773	10211.8
3-Apr-18	-1236	6783	14036	1598	10452	237	13037	558305	-241126	13037	18833	-5796	10245.0
4-Apr-18	7900	25417	13078	8042	12516	4035	25013	604280	-262088	25013	45975	-20962	10128.2
5-Apr-18	522	15989	6317	-7082	4816	-309	6530	586025	-237303	6530	-18255	24785	10128.2
6-Apr-18	-23777	38766	95043	194832	-13315	205898	277164	628776	-2890	277164	42751	234413	10331.6
9-Apr-18	22285	14174	-81018	-202061	24320	-200802	-259535	592775	-226424	-259535	-36001	-223534	10379.4
10-Apr-18	6309	-8086	4613	-9651	6758	5405	16327	581796	-199118	16327	-10979	27306	10402.3
11-Apr-18	6827	-1413	-310	2193	22517	13273	19790	605093	-202625	19790	23297	-3507	10417.2
11-Apr-18	6827	-1413	-310	2193	22517	13273	19790	605093	-202625	19790	23297	-3507	10417.2

FII's have added the long position in Index Future on Wednesday. They have added 6827 in Index Future long while they have reduced the positions in Index Future short by 1413. On option side, they have added the 13273 Open Interests in Index PUT short where they have added 22517 in Index PUT long. On Call side, they have added 2193 in Index CALL short and reduced 310 in Index CALL long. Overall, they have added the 19790 positions in long against short reduced by 3507.

Today News / Corporate Action

Idea Cellular: The telecom department (DoT) is likely to shortly ask Vodafone India and Idea Cellular to collectively pay nearly \$3 billion (Rs 18,870 crore approx) of dues relating to a mix of pending licence fees, spectrum usage charges (SUC) and one-time spectrum charges (OTSC) as a pre-condition for clearing their mega merger.

JSW Steel, Monnet Ispat: JSW Steel, AION have won bid to acquire Monnet Ispat. JSW Steel has strongly refuted ArcelorMittal's allegation that its winning bid for Monnet Ispat was a "mockery" as JSW Steel and Monnet Ispat promoters are related. Speaking on the day JSW Steel received and accepted the Letter of Intent (LoI) for Monnet Ispat, Seshagiri Rao, joint MD, JSW Steel, said the allegations have "no substance" and dismissed them as "acts of frustration" by Arcelor Mittal.

MBL Infrastructures: MBL Infrastructure has emerged as India's first road-builder to achieve a successful insolvency resolution on about Rs 1,700 crore of outstanding loans, with a State Bank of India-led (SBI) consortium approving the revival plan. Anjanee Kumar Lakhotia, the MBL promoter, who was earlier cleared by Kolkata bench of the National Company Law Tribunal (NCLT), will repay the bank loans over nine years and infusion about Rs 100 crore upfront into the company.

Hero, Dabur, Fortis Healthcare: The battle for Fortis Healthcare intensified with the surprise entry of a third contender into the fray as the family offices of Sunil Munjal of Hero Enterprises and the Burmans of the Dabur group submitted a joint bid on the same day that Malaysia's IHH Healthcare Bhd unveiled its offer, which sought to better a revised one by TPG-backed Manipal Health Enterprises.

RIIL: Reliance Industrial Infrastructure (RIIL) on Thursday said its net profit for the fourth quarter (Q4) ended March 31 stood at Rs 2.54 crore. According to the company, its net profit for the financial year 2017-18 stood at Rs 9.74 crore. The company's total revenue for Q4 2017-18 was reported at Rs 27.22 crore, while for the financial year ended March 31, 2018 it was at Rs 101.55 crore.

Increase in Open Interest & Increase in Price

Symbol	Current Price	% Change in Price	Current OI	% Change In OI
TCS	3134	3.96	35000	16.61
NIITTECH	920.95	3.10	1404	10.12
UBL	1040	1.95	1446	9.38
BIOCON	618.45	0.89	4739	9.09

Increase in Open Interest & Decrease in Price

Symbol	Current Price	% Change in Price	Current OI	% Change In OI
BPCL	418.15	-0.12	8385	17.54
APOLLOHOSP	1081.9	-2.55	1404	16.81
CEATLTD	1605	-0.12	3755	16.04
BATAINDIA	773.75	-2.75	2867	12.65

Decrease in Open Interest & Increase in Price

Symbol	Current Price	% Change in Price	Current OI	% Change In OI
PVR	1330.3	1.76	2086	-1.6
BEL	147.6	1.37	5665	-1.08
SRTRANSFIN	1596	1.73	5216	-0.29
TVSMOTOR	639	1.06	3804	-0.24

Decrease in Open Interest & Decrease in Price

Symbol	Current Price	% Change in Price	Current OI	% Change In OI
BALRAMCHIN	73.1	-5.86	4760	-6.02
JPASSOCIAT	20.35	-2.86	6677	-4.27
JINDALSTEL	243.75	-1.71	7277	-3.01
ESCORTS	908	-0.13	2974	-2.01

Global Equity Indices (Asian Indices at 8:40 am)

Indices		
Dow 30	24483.05	1.21
S&P 500	2663.99	0.83
NASDAQ	7140.25	1.01
S&P 500 VIX	18.49	-8.65
AEX	547.90	0.62
CAC 40	5309.22	0.59
FTSE 100	7258.34	0.02
DAX	12415.01	0.98
BOVESPA	85443.53	0.23
HANG SENG	30810.00	-0.07
NIKKEI 225	21784.00	0.57
KOSPI	2456.08	0.55
China A50	12662.66	-0.43

Date	Event	Country	Actual	Expected
12/14/2017	Foreign Exchange Reserves	INR		\$401.8B
01/04/2018	Nikkei Services PMI			
01/06/2018	Bank Loan Growth	INR		
01/10/2018	Balance of Trade Dec	INR	\$-13.83B	\$-12.6B
01/12/2018	Industrial Production YoY	INR	2.2%	3.9%
	Inflation Rate YoY	INR	4.88%	4.70%
01/15/2018	WPI Inflation YoY Dec	INR	3.93%	4.2%
01/30/2018	Government Budget Value Dec	INR	6120B	-5753.6B
02/07/2018	RBI Interest Rate Decision	INR	6%	
	Cash Reserve Ratio	INR	4%	
03/02/2018	Deposit Growth YoY	INR	5.9%	
	Bank Loan Growth YoY	INR	10.7%	
03/05/2018	Nikkei Services PMI FEB	INR	47.8	51.3
	ISM Non-Manufacturing PMI	US		59.5
03/07/2018	ADP Employment Change FEB	US		54.8
	Balance of Trade JAN	US		\$ -52.8B
03/09/2018	Foreign Exchange Reserves	INR		\$420.8B
03/12/2018	Industrial Production YoY	INR		7.4%
	Inflation Rate YoY FEB	INR		8.6%
03/15/2018	Balance of Trade FEB	INR		\$ -15.3B
03/23/2018	Foreign Exchange Reserves	INR		\$420.7B
03/28/2018	Government Budget Value FEB	INR	-6765.59B	-6253.6B
03/30/2018	Government Budget Value FEB	INR		-6253.6B
	Deposit Growth YoY	INR		
	External Debt Q4	INR		\$503.5B
04/02/2018	Nikkei Manufacturing PMI MAR	INR	52.1	51.99
04/05/2018	Cash Reserve Ratio	INR	4%	
	RBI Interest Rate Decision	INR	6%	
04/12/2018	Industrial Production YoY FEB	INR		8.97%
	Inflation Rate YoY MAR	INR	4.44%	5.1%
	Manufacturing Production YoY FEB	INR	8.7%	12.02%
04/13/2018	Balance of Trade MAR	INR	\$ -12B	\$ -14.5B

Published on: 12th April, 2018 © Just Trade Securities Limited

Just Trade Securities Limited (Formerly “Bajaj Capital Investor Services Limited), CIN No.: U67120DL2004PLC130803, Regd Office: Bajaj House 97, Nehru Place, New Delhi – 110019 Tel: (91-11) 41693000. Fax: (91-11) 66608888 E-mail: info@justtrade.in Website: www.justtrade.in; National Stock Exchange of India Ltd. SEBI Regn. No. : INB 231269334/ INB 231269334, Bombay Stock Exchange Ltd. SEBI Regn. No.:INB011269330/ INF011269330; SEBI RA Regn.: INH000002862. For Research related queries, write to: Mr. Raj BardhanKumarSinghat research@rajbks@bajajcapital.com. For Account related information, write to customer care: customercare@justtrade.in or call on 1800-3000-9000

For Disclosures, please click http://justtrade.in/jt_disclosures.pdf